

# FOR LEASE

1300 Union Street, Spartanburg, SC 29302



## Property Information:

- ◆ Rent: Negotiable, NNN
- ◆ Existing Auto Service Center on .368 acres
- ◆ 2,000 SF existing building
- ◆ Traffic controlled hard corner
- ◆ Ample parking
- ◆ One block away from Ingles Supermarket and CVS and one mile away from Walmart, Bi Lo, Big Lots, Walgreens
- ◆ Parcel ID: 71705152
- ◆ Other uses: retail, restaurant, office

Demographics	1 mi	3 mi	5 mi
Est. Population	3,292	35,124	72,938
Est. Households	1,456	14,260	29,567
Avg. HH Income	\$71,088	\$56,704	\$53,168

**RJS** PROPERTIES INC

2730 Rozzelles Ferry Road  
Suite "A"  
Charlotte, NC 28208  
[www.rjsproperties.com](http://www.rjsproperties.com)

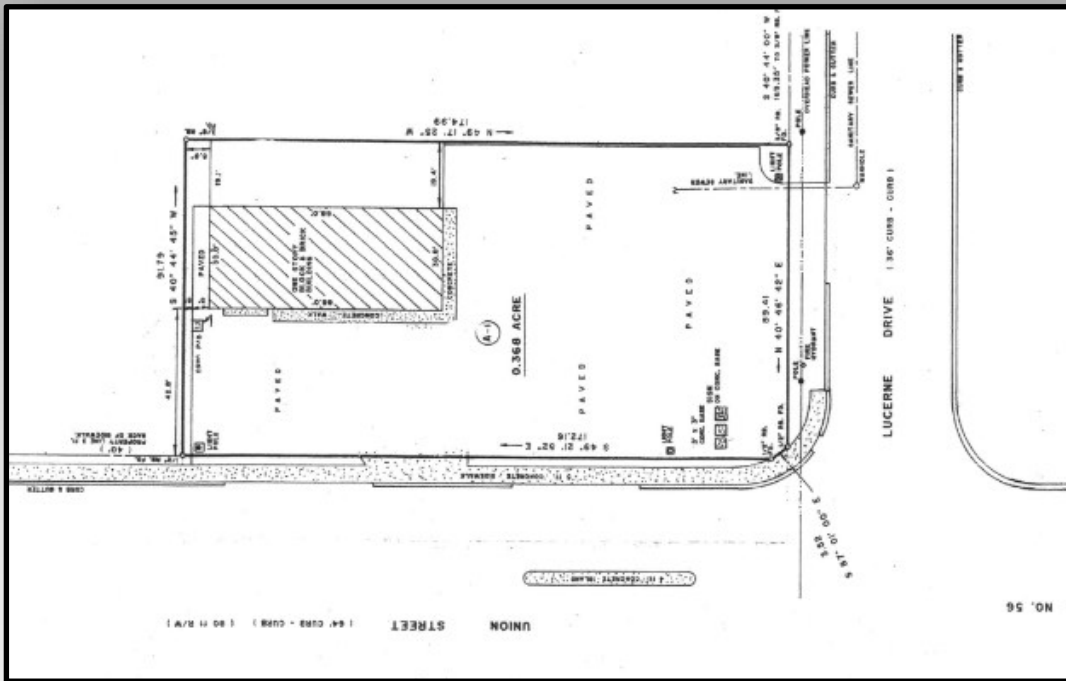
704.365.2152

Bob Sweeney  
[bob@rjsproperties.com](mailto:bob@rjsproperties.com)

RJ Sweeney  
[RJ@rjsproperties.com](mailto:RJ@rjsproperties.com)

# FOR LEASE

## 1300 Union Street, Spartanburg, SC 29302



**RJS PROPERTIES INC**

2730 Rozzelles Ferry Road  
Suite "A"  
Charlotte, NC 28208  
www.rjsproperties.com  
704.365.2152

Bob Sweeney  
bob@rjsproperties.com  
RJ Sweeney  
RJ@rjsproperties.com  
Ryan Conrad  
ryan@rjsproperties.com